

# Licensing Microsoft Windows 11

## Licensing Windows 11

Device and User licenses are available for Windows 11. Device licenses are assigned to an individual device and any user may use Windows 11 on that device. User licenses are assigned to a user who may then use Windows 11 on up to 5 devices. This handout covers the Device licenses for Windows 11 with other handouts in the series covering the User licensing.

## Editions and availability

		Main options for business users	
Volume Licensing/ CSP		Windows 11 Pro	Windows 11 Enterprise
OEM (preinstalled on a PC)	Windows 11 Home	Windows 11 Pro	

## Buying Windows 11 through OEM

- Preinstalled on a new computer
- Full version, non-transferrable license
- The software “lives and dies” on that machine
- A new license is required if the motherboard is changed



## Buying Windows 11 through a Volume Licensing agreement or CSP

- Licenses for Windows 11 Pro, Windows 11 Enterprise, and Windows Enterprise LTSC 2021 are device licenses. They are also upgrade licenses and require a qualifying operating system on the device to which the Windows 11 license will be assigned
- Example eligible qualifying operating systems:
  - Windows 10 Enterprise or Pro
  - Windows 8/8.1 Enterprise or Pro



## Frequency of feature updates

Servicing Channels allow customers to designate how frequently their individual devices are updated for new features.

### General Availability Channel

- New functionality is provided with annual feature update releases
- As long as a device isn't set to defer feature updates, any device in this channel will install a feature update as soon as it's released
- Applies to both Windows 11 Pro and Enterprise editions



## Windows 11 Pro/Enterprise downgrade rights

	OEM	Volume Licensing	
Can downgrade to:	Pro	Pro	Enterprise
Windows 10 Enterprise	-	-	✓
Windows 10 Pro	✓	✓	✓
Windows 8/8.1 Enterprise	-	-	✓
Windows 8/8.1 Pro	-	✓	✓
Windows 7 Enterprise	-	-	✓
Windows 7 Professional	-	✓	✓
Windows Vista Enterprise	-	-	✓
Windows Vista Business	-	✓	✓
Windows XP Professional	-	✓	✓
Windows 2000 Professional	-	✓	✓
Windows 95 / 98 / NT	-	✓	✓

### Long-Term Servicing Channel

- New functionality is provided via new feature releases every two to three years
- Specialized systems—such as PCs that control medical equipment, point-of-sale systems, and ATMs—often require a longer servicing option because of their purpose. These devices typically perform a single important task and don't need feature updates as frequently as other devices in the organization. It's more important that these devices be kept as stable and secure as possible than up to date with user interface changes. The LTSC servicing model prevents Windows Enterprise LTSC devices from receiving the usual feature updates and provides only quality updates to ensure that device security stays up to date
- A Windows Enterprise LTSC 2021 edition is available through some Volume Licensing agreements and CSP
- Windows 11 Enterprise customers may choose to deploy this edition

## Windows 11 availability in Volume Licensing agreements and CSP

Offering	CSP	Open Value and Subscription	Select Plus and MPSA	Enterprise Agreement and Subscription
Windows 11 Pro	✓		✓	
Windows Enterprise LTSC 2021	✓		✓	
Windows 11 Enterprise		✓	✓	✓
Windows VDA		✓	✓	✓

### Windows VDA license

A Windows VDA license may be assigned to any device, with no requirements for a qualifying operating system. Users of the licensed device may then access Windows 11 Enterprise running in a virtual desktop from that device.



### Product activation

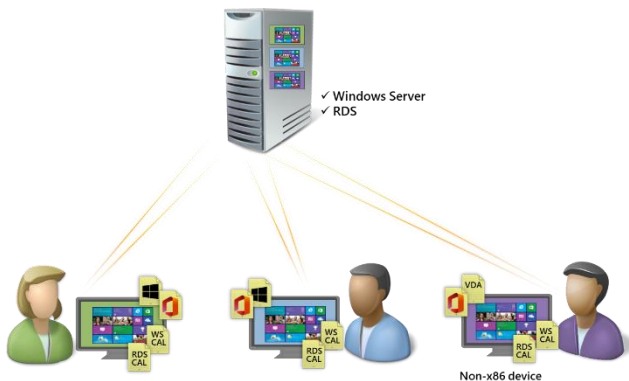
Every copy of Windows 11 must be activated with a valid product key. Licenses bought through OEM can be activated via the Internet or telephone.

There are three ways which organizations with Volume Licensing agreements can activate Windows 11:

- A **Multiple Activation Key (MAK)** is a volume license key that is used for one-time activation with activation services that are hosted by Microsoft. This method is useful for smaller organizations, and for computers which are infrequently connected to the organization's network.
- **Key Management Service (KMS)** activation is done against a service hosted within an organization, enabling organizations to activate systems within their network, eliminating the need for individual computers to connect to Microsoft.
- **Active Directory-based Activation** is a role service that allows organizations to use Active Directory Domain Services (ADDS) to simplify the task of maintaining volume activation services for a network.

### Virtual desktops

- Organizations with Windows 11 Enterprise or Windows VDA licenses may use virtual desktops in an on-premises Virtual Desktop Infrastructure, accessed by any users from licensed devices
- If users use Office in the virtual desktops, an Office Standard/Professional Plus 2021 device license must also be assigned to the device
- If the VDI host uses Windows Server and RDS, all devices must also be licensed with Windows Server and RDS CALs



### Software Assurance

Windows 11 Pro and Windows Enterprise LTSC 2021 licenses do not include Software Assurance

Windows 11 Enterprise includes Software Assurance which gives the following rights:

- **Virtual Desktop Access:** rights to access virtual machines hosted in a Virtual Desktop Infrastructure
- **Local virtualization:** rights to access up to four virtual OSEs on a licensed device
- **MDOP:** Microsoft Desktop Optimization Pack tools
- **Flexible Virtualization Benefit:** rights to install software on Authorized Outsourcers' servers
- Ongoing access to new **Long-Term Servicing Channel builds**

